

# The B-Class

Sports Tourer



Mercedes-Benz



# The B-Class. For the best of what's coming up.

Hit the road. With a Sports Tourer whose agility and comfort make every outing a little journey of adventure. Discover uncharted territories with sustainable, innovative drive systems and, optionally, with the dynamic all-wheel-drive system 4MATIC. And the optional LED High Performance headlamps show up everything in the very best light. There's so much to be discovered. Are you ready? Your B-Class is waiting.

FOR THE BEST IN EVERY FORMAT.



Experience your B-Class in fascinating HD. With the Mercedes-Benz brochure app for the iPad® and with the Digital Owner's Manual from "Mercedes-Benz Guides" for the iPhone®. Both apps feature a host of films and additional content and are available free of charge from the iTunes Store®.



**For the best in every guise:**

**2 | Mercedes-Benz B 250 4MATIC**

**polar silver metallic**

AMG Line, AMG 5-twin-spoke light-alloy wheels, Exclusive package, Night package, cranberry red leather upholstery, high-gloss black ash wood trim

**14 | Mercedes-Benz B 220 d**

**jupiter red**

Urban equipment line, 5-twin-spoke light-alloy wheels, Night package, black leather upholstery

**20 | Mercedes-Benz B 220 d**

**jupiter red**

AMG Line equipment line, AMG 5-twin-spoke light-alloy wheels, AMG Exclusive package, Night package, black RED CUT leather upholstery, carbon-fibre-look trim

**For the best in every detail:**

**24 | Mercedes-Benz Intelligent Drive**

**26 | Mercedes me**

**30 | Mercedes-Benz Service**

**34 | BlueEFFICIENCY**

**36 | Engines**

**37 | 4MATIC all-wheel drive**

**38 | COMAND Online multimedia system**

**40 | Ambient lighting**

**41 | EASY-VARIO-PLUS system**

**42 | Equipment and packages**

**52 | Optional equipment**

**53 | Genuine accessories**

**54 | Wheels**

**56 | Technical data**


**59 | Upholstery and paintwork**

The illustrations may show accessories and optional extras which are not part of the standard specification.









A dynamically designed front apron, delicately styled headlamps – and a unique light show which pays as much attention as it draws: in conjunction with the optionally available LED High Performance headlamps the driver is greeted by a blue light when unlocking the doors. Get in and feel good. In a spacious interior that's ideally prepared for all activities.

Attractive and accomplished.  
With the very best pedigree.









For whatever you encounter along the way.

Whether you are on your way to the mountains alone or to the seaside with the whole family. The reassuring feeling of driving a Mercedes-Benz accompanies you everywhere. Innovative driving assistance and safety systems support the driver and protect the occupants and other road users. Active Brake Assist, for example, which can provide the driver with a visual and audible warning of an impending rear-end collision and if necessary even initiate braking intervention automatically. That's the B-Class with Mercedes-Benz Intelligent Drive.







## LED HIGH PERFORMANCE HEADLAMPS

What is required of light technology in a Mercedes? In particular during journeys at night it must not place excessive strain on the driver's eyes, and it should also be efficient and durable. The optional LED High Performance headlamps get straight to the point. The LED projection technology in the low beam headlamp and the LED reflection technology in the high beam provide for excellent illumination of the road. With a pleasant colour temperature which corresponds to that of daylight. And with the splendour befitting a Mercedes.





A silver car is parked on a city street next to a building. The car is a modern hatchback, shown from the side and rear. The street is paved with dark asphalt and has white dashed lines. The building is made of light-colored stone or concrete, with large windows and a glass door. The scene is brightly lit, suggesting a sunny day, with long shadows cast across the street.

The best motive for  
an active “drivestyle”.







## Lighting to brighten any mood.

Light contributes considerably to our well-being. All the more reason to pay it special attention in a Mercedes. In the B-Class the optional ambient lighting creates a unique feel-good atmosphere. Particularly at night, its pleasantly indirect light accentuates the lines and the high-quality materials. The ambient lighting is based entirely on LED technology and offers twelve different colours and five dimmer settings.











A photograph of the rear interior of a car. The seats are upholstered in a rich, cranberry red leather with visible stitching. The door panels and center console are black with red leather accents. A black seatbelt is visible on the right side. The car is parked in front of a building with classical architecture, visible through the rear window.

## A fiery statement tempered by a due portion of restraint.

A stylishly coordinated combination of high-quality appointments and materials characterises the optionally available Exclusive package. The 3-spoke multifunction steering wheel is finished in fine leather. The luxury seats upholstered in leather, for example in cranberry red, add a fashionable flourish and fine highlights with contrasting topstitching.




#### ACTIVE BRAKE ASSIST

A little too close, and you're on collision course before you know it. Rear-end collisions are among the most common types of accident in road traffic. This has prompted Mercedes-Benz to develop Active Brake Assist, a radar-based safety system which can minimise the risk of a rear-end collision or lessen the severity of an accident. And this is how it works: on detecting that the distance to the vehicle in front is inadequate in the speed range between 30 and 250 km/h, the system alerts the driver visually via a warning lamp in the instrument cluster. If the distance continues to lessen, an audible warning is also sounded. In addition, the brake power applied by the driver can be boosted as appropriate to the given situation in order to avoid a collision. And should the driver not react at all, the system can intervene and reduce the speed by means of autonomous braking.





A red Volvo car is shown from a front-three-quarter view, driving on a street. The car is in motion, as indicated by the blurred background and the motion-blurred wheels. The background features a building with horizontal siding and a large window. The lighting suggests a bright, sunny day. The text "Keep your distance. Stay ahead." is overlaid on the right side of the image.

Keep your distance.  
Stay ahead.



# Because the best is coming up.

B for best value: systematically optimised aerodynamics resulting in a  $C_d$  figure of only 0.25\* reduce fuel consumption substantially.



\* B 180 d BlueEFFICIENCY Edition with wheel R00.











The best perspective.











Captured on camera: the sporty AMG Line with the Night package. Powerful: the AMG bodystyling with the front and rear apron, side sill panels and high-sheen AMG light-alloy wheels. The Night package makes a striking impression with selected design elements in high-gloss black, such as the radiator trim with two black louvres and chrome inserts. Heat-insulating dark-tinted glass starting from the B-pillar further underlines the vehicle's sporty character.



## Breathtaking prospects.

With the optional AMG Exclusive package adding a special touch of exclusivity and individuality the entire interior is literally on red alert. On the upholstery in black RED CUT leather, the dashboard and the door centre panels in ARTICO man-made leather and the multifunction sports steering wheel in leather with a flattened bottom section, red contrasting topstitching adds striking sporty highlights throughout.







## Mercedes-Benz Intelligent Drive – pointing the way to accident-free and autonomous driving.

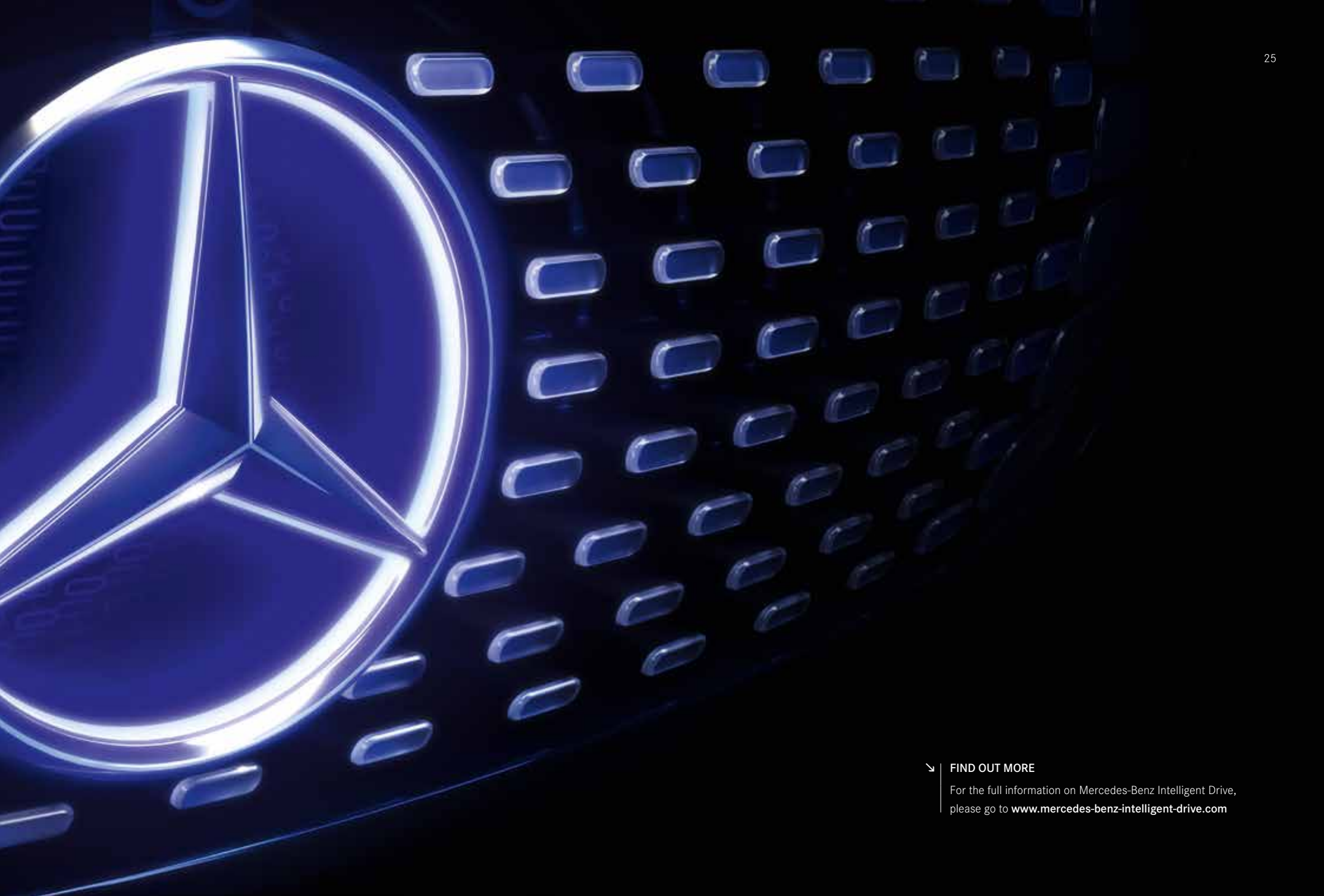
Mercedes-Benz is the first automotive manufacturer worldwide to have developed an integral safety concept, with the aim of safe driving, responding in an appropriate manner to hazards, avoiding accidents and mitigating the consequences of accidents. For the occupants of a Mercedes and for all other road users, too.

Mercedes-Benz Intelligent Drive forms part of this integral safety concept. It makes your Mercedes one of the most intelligent automobiles in the world – an “intelligent partner”. The Mercedes-Benz Intelligent Drive assistance systems are able to recognise hazards, provide timely warnings and even intervene autonomously when necessary – by performing braking manoeuvres, for example. In this way, accidents can be prevented or the severity of accidents can be significantly reduced. In order to protect passengers as necessary in case of dangers, additional protective features such as PRE-SAFE® are activated as anticipatory measures. These features vary according to the model concerned.

Many Mercedes-Benz vehicles already offer the option of a Driving Assistance package. The key functions of this package include partially automated driving on motorways, on country roads and in built-up areas. The Driving Assistance package also lends support when changing lane on multi-lane roads, for example during overtaking. This relieves the driver's workload, as in normal driving they no longer need to brake or accelerate. The driver also receives substantial support with steering – even in bends.

Never before have safety, comfort and measures to reduce the strain on the driver been combined so effectively. This intelligent and pioneering interplay of sensors and safety and assistance systems represents a milestone on the road to autonomous and accident-free driving. And a fascinating new experience into the bargain.





↘ FIND OUT MORE

For the full information on Mercedes-Benz Intelligent Drive,  
please go to [www.mercedes-benz-intelligent-drive.com](http://www.mercedes-benz-intelligent-drive.com)





Our world in your hands.

[www.mercedes.me](http://www.mercedes.me) – it's all about you. Discover a world of fascinating services, products and innovations that will simplify and enrich your life. Coming straight to you in digital form. And turning our world into your world.









## Life can be so fascinating when you're fully connected.

All our connectivity and mobility services plus a host of other fascinating features – all in one place and exclusively for you. That's Mercedes me. Register free of charge today and make the world of Mercedes-Benz your very own at your convenience – on your PC or laptop or in mobile mode via tablet, smartphone or smartwatch. And because your life is forever changing, our services are also continually evolving. Join us now at: **[www.mercedes.me/welcome](http://www.mercedes.me/welcome)**

Looking for individual inspiration in real life, too? The Mercedes me Stores are a fascinating phenomenon worldwide – in Beijing, Moscow and Hamburg, for example.





**Mercedes me connect** connects you with your vehicle – and your vehicle with the whole world. A comprehensive range of convenient connectivity services relating to all areas of your vehicle supports you, ensuring greater safety, closer contact and an even more fascinating driving experience. It's reassuring to stay connected all the time while you're on the move. Mercedes me connect includes Standard Services, which are able to provide you with automatic support in the event of a breakdown or an accident, as well as Remote Online Services – the option enabling vehicle settings to be carried out by smartphone – and lots more besides.

**Mercedes me inspire** offers special brand experiences and an opportunity to engage in an inspiring dialogue. We aim to share our ideas with you and we would like to know your ideas and wishes. So that we can always offer you the best solutions. A community is available to this end, and you will also find a growing range of offerings and experiences which go beyond the traditional vehicle-related topics – from areas such as events, travel and lifestyle.

**Mercedes me move** offers access to intelligent mobility solutions: car2go is the pioneer and global market leader in free-floating car sharing, the moovel mobility app pools the offerings from various mobility providers to find the ideal route from A to B. With the mytaxi app you can order a taxi, track its approach live and pay for your journey in a convenient manner. Mercedes-Benz Rent offers vehicles to suit all occasions for short- or long-term rental from an authorised Mercedes-Benz dealer near you. Blacklane enables you to book a chauffeur-driven limousine, FlixBus offers inexpensive, comfortable and environment-friendly trips on long-distance coaches.

**Mercedes me assist** makes easy work of organising maintenance for your vehicle, providing a convenient online means of locating a Mercedes-Benz dealer in your neighbourhood and arranging a service appointment. The digital service report keeps you up to date on performed service work. The report can be made available to you online just one day after a service. In addition to the current service report, you can also view your vehicle's complete service history and service intervals, and you can print this information out if you so wish.

**Mercedes me finance** offers you various routes to your vehicle of choice. Mercedes-Benz Bank/Mercedes-Benz Financial Services finds the ideal leasing, financing and insurance solution together with you – tailored to your needs. Our leasing products enable you to drive the latest models at all times while enjoying maximum flexibility, as you pay not for acquisition of the vehicle, but only for its use. You also benefit from attractive monthly instalments. Our financing arrangements enable you to pay for your new Mercedes-Benz in a way that suits your personal budget. You can tailor your monthly instalments to your needs by deciding on an appropriate down-payment and term for your contract. Our individual insurance solutions offer reliable protection for your budget and your vehicle on attractive terms. Your existing financial contracts can be managed conveniently online.<sup>1</sup>

<sup>1</sup> Depending on market availability.



## Our service: the perfect fit for your Mercedes.

Beyond the car itself, you also acquire something priceless – an exclusive partnership with Mercedes-Benz. For you, this means safety, independence and motoring free of any worries. In other words: the reassuring feeling of driving a Mercedes.

**The best for your Mercedes.** No-one knows your Mercedes better than our experienced specialists at the Mercedes-Benz workshops. The comprehensive range of services and the high standard of quality ensure that your vehicle is in top condition. We use proven Mercedes-Benz GenuineParts and special tools to this end.

**The best for you.** Motoring free of any worries right from the word go: with the tailor-made Mercedes-Benz Service Contracts. These offer you the benefits of a reliable basis for long-term planning, permanent control over costs, fixed monthly rates and cost transparency. Plus ideal protection from additional workshop costs.

**The best for your mobility.** The Mercedes-Benz Mobilo<sup>1</sup> mobility solution provides for motoring free of any worries throughout Europe – covering breakdowns, accidents, minor mishaps and vandalism. The benefits offered by Mobilo include on-the-spot assistance, a replacement vehicle, towing and overnight hotel accommodation, for example. Mobilo comes free of charge for the first two years after initial registration and can subsequently be renewed each time the vehicle is serviced by an authorised service partner, for a period of up to 30 years in all. Whenever you need assistance, you can reach us free of charge throughout Europe on 00800 1 777 7777<sup>2</sup>.

### ↘ FIND OUT MORE

For the full information on Mercedes-Benz Service Contracts, go to **[www.mercedes-benz.com](http://www.mercedes-benz.com)** – or ask your authorised Mercedes-Benz dealer to draw up an individual offer for you.

<sup>1</sup> Our general terms and conditions apply. The period of validity is extended after each service carried out by an authorised Mercedes-Benz service partner until the due date for the next service – up to a maximum of 30 years after initial registration. <sup>2</sup> Roaming charges may apply when calling from abroad.







## What would motorsport be without Mercedes-Benz?

The first vehicle to ever win an automobile race was powered by a Daimler engine. The first Mercedes was a racing car. The Silver Arrows – a true legend. Mercedes-Benz has a long tradition of involvement with the world of sport. Motorsport shapes the brand and every vehicle bearing the Mercedes star to this day. Discover the brand's unique history first-hand: at the Mercedes-Benz Museum in Stuttgart.

### ↘ FIND OUT MORE

Discover just what has been moving the world for over 130 years and take a journey through time as well as through the history of the automobile at the Mercedes-Benz Museum. More than 1500 exhibits await you on 16,500 m<sup>2</sup> of floorspace, including unique gems such as the oldest surviving Mercedes from 1902 or the legendary gull-wing models. Welcome to a place of innovation:

[www.mercedes-benz.com/museum](http://www.mercedes-benz.com/museum)

[www.facebook.com/mercedesbenzmuseum](https://www.facebook.com/mercedesbenzmuseum)

[www.instagram.com/mercedesbenzmuseum](https://www.instagram.com/mercedesbenzmuseum)

[www.twitter.com/mb\\_museum](https://www.twitter.com/mb_museum)

[www.google.com/+mercedesbenzmuseum](https://www.google.com/+mercedesbenzmuseum)

[www.youtube.com/mercedesbenzmuseum](https://www.youtube.com/mercedesbenzmuseum)





## What would Mercedes-Benz be without motorsport?

3 June 1934 marked the beginning of the Silver Arrows legend in the International Eifel Race at the Nürburgring. Today this legend is more alive than ever: in 2016 the Silver Arrows works team Mercedes-AMG Petronas Motorsport won the Formula 1 constructors' and drivers' titles for the third year in a row, making history by winning 19 of the 21 Grand Prix races. In a spectacular finale in the desert city of Abu Dhabi, Nico Rosberg secured his first world championship title in his Mercedes-Benz F1 W07 Hybrid. The value of these successes extends way beyond the race track: every mile raced advances development in fields such as lightweight materials and hybrid technology for series production.

### FIND OUT MORE

Fascinating Formula 1 goes multimedia:

[www.facebook.com/MercedesAMGF1](https://www.facebook.com/MercedesAMGF1)

[www.twitter.com/MercedesAMGF1](https://www.twitter.com/MercedesAMGF1)

[www.youtube.com/MercedesAMGF1](https://www.youtube.com/MercedesAMGF1)

[www.google.com/+MercedesAMGF1](https://www.google.com/+MercedesAMGF1)

[www.instagram.com/MercedesAMGF1](https://www.instagram.com/MercedesAMGF1)

[www.MercedesAMGF1.com](http://www.MercedesAMGF1.com)

[www.mercedes-benz.com/motorsport](http://www.mercedes-benz.com/motorsport)



Mercedes-AMG F1 W08 EQ Power+, 2017 season.





## 0.25\*. A small figure that makes a big impact.

The B-Class sets new standards: the low wind resistance cuts driving noise and fuel consumption. Courtesy of a large roof spoiler, an aerodynamically efficient A-pillar design, aerodynamically optimised exterior mirrors and extensive panelling for the underbody. Further BlueEFFICIENCY equipment for cutting consumption and emissions includes the ECO start/stop function, tyres with optimised rolling resistance, the ECO display in the instrument cluster and the shift point indicator. The B 180 d BlueEFFICIENCY Edition is a benchmark in terms of efficiency. The adjustable radiator shutter and a lowered comfort suspension further optimise wind resistance, leading to even more exemplary emission values.

- 1 Adjustable radiator shutter (B 180 d BlueEFFICIENCY Edition)
- 2 ECO display in the instrument cluster
- 3 The refrigerant compressor is controlled to save energy and only active when required
- 4 Aerodynamic optimisation all-round for low fuel consumption and quiet running
- 5 Dual clutch transmission 7G-DCT
- 6 Tyres with reduced rolling resistance





5 6







## Driving ambition.

Extremely efficient diesel and petrol engines are available for the B-Class in a total of nine output ratings. All engine variants are turbocharged and feature the ECO start/stop function as standard.

Depending on the engine variant, the power is transferred via a 6-speed manual transmission or the 7G-DCT automatic dual clutch transmission, which changes gear particularly smoothly and with hardly any interruption in tractive power.

### ➤ FIND OUT MORE

The full technical data for the B-Class can be found on page 56/57.

### THE ENGINE RANGE

#### Diesel:

B 160 d with an output of 66 kW (90 hp) and 240 Nm of torque

B 180 d/B 180 d BlueEFFICIENCY Edition with an output of 80 kW (109 hp) and 260 Nm of torque

B 200 d/B 200 d 4MATIC with an output of 100 kW (136 hp) and 300 Nm of torque

B 220 d/B 220 d 4MATIC with an output of 130 kW (177 hp) and 350 Nm of torque

#### Petrol:

B 160 with an output of 75 kW (102 hp) and 180 Nm of torque

B 180/B 180 BlueEFFICIENCY Edition with an output of 90 kW (122 hp) and 200 Nm of torque

B 200 with an output of 115 kW (156 hp) and 250 Nm of torque

B 220 4MATIC with an output of 135 kW (184 hp) and 300 Nm of torque

B 250/B 250 4MATIC with an output of 155 kW (211 hp) and 350 Nm of torque





## On the gripping subject of traction. 4MATIC all-wheel drive.

Specially developed for the B-Class platform. In normal conditions as efficient as front-wheel drive, but with tangibly more traction in the wet or snow: **4MATIC all-wheel drive** for the B-Class.

An electro-hydraulically controlled multiple-disc clutch integrated in the rear axle differential enables variable torque distribution. This ranges from particularly economical front-wheel drive only, e.g. for steady motorway driving, to a 50 : 50 split on snow or slippery road surfaces or in dynamic driving manoeuvres.

---

### FASCINATING SUSPENSION AND STEERING TECHNOLOGY

---

A good balance between comfort and dynamism is offered by the **comfort suspension**. Low levels of rolling and pitching improve vehicle control and handling safety.

The **suspension with Adaptive Damping System** enables the driver to alter the vehicle's damping characteristics via the **DYNAMIC SELECT switch**. Switching from comfort to sport mode increases the lateral dynamics and provides for a particularly intensive driving experience.

The **lowered comfort suspension** combines ride comfort and agility. Lowering the body by 20 mm at the front and 15 mm at the rear improves aerodynamics.

**Speed-sensitive steering** provides variable power assistance according to the vehicle's speed. At high speeds the servo assistance is reduced; at lower speeds it is continually increased.

The **Sports Direct-Steer system** adds to the comfort of speed-sensitive power steering with a variable ratio dependent on the steering angle. On winding roads, for example, this produces a more agile handling response and improved straight-line stability.

---





## Perfectly connected: with Apple CarPlay™.

**Apple CarPlay™** for the iPhone® and **Android Auto** for Android devices allow optimum integration for a perfect car infotainment system. Including navigation option, telephony and messaging function by means of voice control plus access to the music player. Smartphone integration is part of COMAND Online and available as an option with Audio 20.

### NAVIGATION AND INFOTAINMENT OPTIONS

Navigation, telephone, audio, video, internet – with the **COMAND Online** control and display system the driver is able to keep these and many other functions in view and under control. Everything is displayed in high resolution on the media display with a screen diagonal of 20.3 cm.

**Live Traffic Information**<sup>1</sup> (part of optional COMAND Online and Garmin® MAP PILOT) facilitates reception of the latest and precise traffic information for optimised dynamic route guidance and precisely calculated arrival times. Data transfer takes place with the aid of a communication module via a mobile internet connection.

User-friendly navigation, precise map data and excellent route guidance – the **Garmin® MAP PILOT** brings all the familiar benefits of a Garmin® navigation system to the Audio 20 CD – including Live Traffic Information. It is all done by simply inserting an SD card containing navigation software and map data.

The **Audio 20 CD** multimedia system combines entertainment with information and communication. Audio 20 CD with internet capability, radio with twin tuner and CD player also allows mobile devices to be networked via Bluetooth®, optionally also on the 20.3 cm media display.

<sup>1</sup> Three months free of charge; free use for the full three-year period only in conjunction with set-up of a Mercedes me user account and subject to acceptance of the General and Special Terms of Use.





## All linked up. With Mercedes me connect.

Our innovative and individualised mobility, connectivity and service offerings go by the name of Mercedes me. As part of this fascinating Mercedes-Benz world of experience, **Mercedes me connect** fully integrates driver, vehicle and personal lifestyle. Mercedes me connect Standard Services such as the Mercedes-Benz emergency call system or breakdown management offer immediate assistance.

The **Remote Online** option prepares the vehicle for the use of additional, separately available Mercedes me connect services, such as the Parked Vehicle Locator function (see image below) or retrieval of the vehicle's current status (see image above). Remote Online is optionally available with the Audio 20 multimedia system and forms an integral part of the optional COMAND Online multimedia system, which opens up the whole world of Mercedes me connect to you – including browser, navigation with Live Traffic Information (free to use for three years following registration in the Mercedes me connect Store within the three-month registration period) and numerous apps. The Mercedes me connect services are only enabled at your request, apart from the automatically activated Mercedes-Benz emergency call system and Live Traffic Information.

➤ FIND OUT MORE

The full details are available at [www.mercedes.me/de](http://www.mercedes.me/de)



## The ambient lighting bids you a warm welcome.

Climb in and feel at home – with its pleasant, indirect light the **ambient lighting** available in combination with the optional Light and Sight package creates a real sense of well-being throughout the entire interior. Especially at night, it accentuates the contouring and high quality of the interior design, imparts a feeling of security thanks to an impression of spaciousness and reduces dazzle from oncoming traffic. Twelve different colours and five dimming levels are available to create the desired lighting mood. The ambient lighting features full LED technology, and is conveniently controlled via the instrument cluster. It also switches on when the doors are opened, welcoming the passengers on board.

### MORE LIGHT, PLEASE

The optional **Light and Sight package** provides a higher quality feel for the interior and optimum visibility in the car. It comprises the single-tone ambient lighting, function illumination and a rain sensor for the windscreen wipers.

The optional brushed stainless-steel **door sill panels** add exclusive sporty highlights with their illuminated “Mercedes-Benz” lettering. They also protect the entrance area from damage.

The **ambient lighting** greets you with an uplifting play of colour as soon as you open the doors.



# A dream of a load compartment.

The optional **EASY-VARIO-PLUS system** features 140 mm fore/aft adjustment for the rear seats, providing for added stowage capacity or more kneeroom. The system also includes the Load Compartment package, with a load compartment floor that can be set to either of two heights. In the higher position, this creates a surface that is almost level with the load compartment sill. This can be extended still further by folding down the backrests of the rear seats. In the lower position, the luggage space is enlarged, making it possible to load particularly high items. The front passenger seat can be folded forward. This allows the backrest to be used as a table by the rear-seat passengers, or the extra space to be used to load particularly long items. The angle of the rear-seat backrests can be adjusted to a 90° cargo position. This extends the luggage space, while the rear seats can still be used for passengers. The folding armrest with two cup holders offers a practical through-loading feature.

## FURTHER LOAD COMPARTMENT OPTIONS

For more order, safety and additional stowage areas in the load compartment there is the optional **Load Compartment package** with a height-adjustable load compartment floor, a 12 V socket and a folding box beneath the load compartment floor.

Duly adapted protection for children aged from around three to twelve comes in the form of the optional **child seats** integrated in the outer rear seats. For children aged from around two to four, a side head restraint (already included) and a special padded play table are additionally required.









## The standard equipment.

You can customise your B-Class right down to the finest points of detail. Equally, you can simply marvel at the extensive standard equipment.

### EXTERIOR HIGHLIGHTS

Steel wheels with 10-hole wheel trims (R00), fitted with 195/65 R 15 tyres (certain models with steel wheels featuring 10-hole wheel trims [643] with 205/55 R 16 tyres or 10-spoke light-alloy wheels [R43] with 225/45 R 17 tyres)

Reflection-type headlamps

Window weatherstrip and waistline trim in matt black plastic

Door handles and bumpers painted in vehicle colour

Comfort suspension

### INTERIOR HIGHLIGHTS

Seats upholstered in Venlo fabric

Matrix-look trim

3-spoke multifunction steering wheel with twelve function buttons

KEYLESS-GO starting function with convenience central locking system

Cruise control with variable speed limiter

Roof liner in crystal grey fabric

### ↘ FIND OUT MORE

As attractive as this overview for the B-Class may be, it only provides an initial impression. For the complete range of standard equipment please refer to the price list, which is also available for viewing online.





## Reassuringly stylish: the Style line.

Whether you are cruising the boulevards or exploring the countryside, these perfectly matched, stylish design and comfort features exude self-assurance and individuality.

### EXTERIOR HIGHLIGHTS

10-spoke light-alloy wheels with 205/55 R 16 (55R) tyres

Radiator trim with two louvres painted in iridium silver and chrome inserts

Beltline trim strip in chrome

Long chrome trim strip on the rear bumper

### INTERIOR HIGHLIGHTS

Seats with accentuated shoulder area and Vianen fabric upholstery

Seat Comfort package including seat cushion length adjustment with a 60 mm wider surface for the thighs

Line pattern trim

3-spoke multifunction steering wheel with twelve function buttons

Shift lever with silver-chrome trim highlights

Instrument cluster with 11.4 cm TFT colour multifunction display

High-gloss black light switch with ring in silver chrome









## Inspiringly progressive: the Urban line.

Take in the sights in your urbane Mercedes. Exceptional design is everywhere you look, while the interior offers a highly individual style.

### EXTERIOR HIGHLIGHTS

---

5-twin-spoke light-alloy wheels with 225/45 R 17 (R04) tyres

---

Radiator trim with two louvres painted in iridium silver and chrome inserts

---

Twin-pipe exhaust system with chrome-look tailpipes

---

Beltline trim strip in chrome

---

Short chrome trim strip on the rear bumper

---

### INTERIOR HIGHLIGHTS

---

Seats with accentuated shoulder area and upholstery in ARTICO man-made leather/Montfort fabric with contrasting topstitching

---

Seat Comfort package, including seat cushion length adjustment with a 60 mm wider surface for the thighs

---

3-spoke multifunction steering wheel in leather, with perforated grip area and twelve control buttons plus topstitching and trim in silver chrome

---

Shift lever in perforated leather with contrasting topstitching and silver-chrome highlights

---

Instrument cluster with silver-coloured dials and red pointers plus 11.4 cm colour TFT multifunction display

---

Roof liner in black fabric (optionally roof liner in crystal grey fabric)

---





## AMG Line.

Take your B-Class to the sporting pinnacle in terms of looks, driving feel and exclusivity. The AMG Line design and equipment line comprises extensive AMG bodystyling and further measures for enhancing driving dynamics. In the interior, too, which presents itself in a decidedly sporty guise.

### EXTERIOR HIGHLIGHTS

AMG bodystyling with front and rear apron plus side sill panels

AMG 5-twin-spoke light-alloy wheels, painted titanium grey with a high-sheen finish, with 225/40 R 18 tyres

Radiator trim with two louvres painted in iridium silver with chrome inserts

Twin-pipe exhaust system with chrome-look tailpipes

Lowered comfort suspension and Sports Direct-Steer system

Perforated front brake discs

Brake callipers with "Mercedes-Benz" lettering at the front

### INTERIOR HIGHLIGHTS

Seats with accentuated shoulder area and upholstery in ARTICO man-made leather/black DINAMICA microfibre with contrasting red topstitching

Seat Comfort package, including seat cushion length adjustment with a 60 mm wider surface for the thighs

Carbon-fibre-look trim

3-spoke multifunction sports steering wheel in leather, with flattened bottom section, perforated in the grip area and with contrasting red topstitching

Shift lever in perforated leather with contrasting red topstitching and silver-chrome highlights

Brushed stainless-steel sports pedals with rubber studs







## Exclusive package.

The stylishly coordinated combination of selected interior appointments meets very high expectations with regard to comfort, quality and design. The highlights include heated front seats with 4-way lumbar support, which are covered in fine leather to match the multifunction steering wheel and gearshift lever. The dashboard and the door centre panels are finished in matching ARTICO man-made leather. Design features in silver chrome and trim in open-pore eucalyptus wood or high-gloss black ash also contribute to the exclusive ambience.

## AMG Exclusive package.

Building on the AMG Line, this equipment package offers maximum exclusivity, individuality and sportiness. Highlights include the heated seats with 4-way lumbar support, which make a striking impression with their RED CUT black leather upholstery featuring contrasting red topstitching. To match these seats, the dashboard and the door centre panels are finished in ARTICO man-made leather, as are the armrests in the doors. The multifunction sports steering wheel in leather with flattened bottom section and perforated grip area, together with the shift lever in perforated leather, feature a look and feel that underscores the interior's sporty character. The contrasting red topstitching is to be found on all these features, demonstrating a loving attention to detail.



## Night package.

The Night package offers striking exterior features to lend the vehicle an expressive sporty character. These include selected design features in black. The radiator trim boasts two louvres in high-gloss black and chrome inserts. Also in black are the high-sheen 45.7 cm (18-inch) 5-twin-spoke light-alloy wheels, the exterior mirror housings and the beltline trim strips. Dark-tinted heat-insulating glass from the B-pillar onwards shields the interior from prying eyes while underscoring the vehicle's sporty character.



## Optional extras.

There are endless ways of putting your personal stamp on the B-Class. From small details that add special touches to comfort features which until recently were the reserve of the luxury segment. Take your time to browse around – in this catalogue, by reference to the price list or online. A convenient means of configuring your B-Class is available on the national website for your country, accessible via [www.mercedes-benz.com](http://www.mercedes-benz.com).

- 1 In addition to their distinctive visual appeal, the **LED High Performance headlamps** boost night-time driving safety thanks to broad light distribution, a daylight-simulating colour temperature, and low energy consumption. The “Coming Home” function welcomes the driver with an exceptional light display from blue to white when they unlock the car. The tail lights feature LED technology and create a visual highlight while improving visibility.
- 2 **KEYLESS-GO**: the vehicle can be conveniently unlocked, started and locked with this access and drive authorisation system – simply by having the electronic key on your person.
- 3 When not in use, the **trailer coupling**<sup>1</sup> can be folded out of the way behind the rear bumper. The coupling is simply folded out to attach a car trailer or mount a bicycle carrier. A control with LED in the luggage compartment serves to release the coupling.
- 4 With twelve speakers, including a woofer, and a 9-channel DSP amplifier, the 450 W **Harman Kardon® Logic 7® surround sound system** serves up a superlative listening experience.
- 5 **Panoramic sliding sunroof**: with its large glazed areas, this roof system ensures a particularly bright and welcoming ambience in the interior. The rear part consists of a fixed panoramic glass sunroof while the front part is an electrically operated glass sliding sunroof.

<sup>1</sup> Also available in combination with AMG Line.



# Genuine accessories.

The B-Class leaves very little to be desired. And for those extra-special requirements there are genuine accessories. These cover almost every conceivable need for more pleasant and individual motoring.

1 **Garmin® MAP PILOT** upgrades Audio 20 CD into a fully fledged Garmin® navigation system. The navigation software and map data are provided on an SD memory card. Simple operation via vehicle controller and voice recognition. The (3D) map with additional navigation details incl. Live Traffic Information (for certain countries) is shown on the media display. Software and map updates can be carried out via the internet, using a free download manager.

2 Let your **Mercedes star** shine brightly. The star centred in the radiator grille of your Mercedes will light up courtesy of fibre optics and LED technology when the vehicle is unlocked by remote control and when a door or the boot lid is opened. Only functions when engine is switched off, not available in conjunction with DISTRONIC.

3 **Boot tub, shallow.** Made of impact-resistant polypropylene with an anti-slip effect. Protects your boot floor from dirt and is designed to fit perfectly into your boot.

4 **Alustyle Quickfix basic carrier bars.** Precisely coordinated with the body of your Mercedes-Benz, the aluminium carriers form the base for attaching many Mercedes-Benz transportation solutions: combined ski and snowboard racks, bicycle racks or roof boxes. They can be installed quickly and easily without tools thanks to an innovative, new quick-grip mounting system. Aerodynamic Mercedes-Benz design with optimised noise level. Crash-tested. Lockable.

**New Alustyle "Comfort" ski and snowboard rack.** Fits the anchorage on your basic carrier. For up to six pairs of skis\* or four snowboards, lockable.

➤ **DISCOVER THE ENTIRE RANGE**

Now online at [www.mercedes-benz-accessories.com](http://www.mercedes-benz-accessories.com)

\* Depending on ski dimensions.







R00



55R



R43



R15



643



R78



R04



25R

## Wheels.

Wheels are indispensable on technical grounds, of course. But on an emotional level, too, perfect wheels are an absolutely crucial ingredient of many people's dream car. With this in mind, we have put together a particularly large and diverse selection for you.

### STANDARD EQUIPMENT AND OPTIONAL EXTRAS

R00 Steel wheels with 10-hole wheel trim  
and 195/65 R 15 tyres

643 Steel wheels with 10-hole wheel trim  
and 205/55 R 16 tyres

55R 10-spoke light-alloy wheels with 205/55 R 16 tyres

R78 5-twin-spoke light-alloy wheels, painted matt lack  
with a high-sheen finish, with 205/55 R 16 tyres

R43 10-spoke light-alloy wheels with 225/45 R 17 tyres

R04 5-twin-spoke light-alloy wheels, painted silver,  
with 225/45 R 17 tyres

R15 5-twin-spoke light-alloy wheels, painted himalayas  
grey, with 225/45 R 17 tyres

25R 10-spoke light-alloy wheels, painted vanadium silver,  
with 205/50 R 17 tyres



R69



678



791



01R



612



646

## AMG

R69 5-spoke light-alloy wheels, painted black with a high-sheen finish, with 225/45 R 17 tyres

01R 5-twin-spoke light-alloy wheels, painted black with a high-sheen finish, with 225/40 R 18 tyres

678 AMG 5-twin-spoke light-alloy wheels, painted titanium grey with a high-sheen finish, with 225/40 R 18 tyres

612 AMG 5-twin-spoke light-alloy wheels, painted black with a high-sheen finish, with 225/40 R 18 tyres

791 AMG multi-spoke alloy wheels, painted titanium grey with a high-sheen finish, with 225/40 R 18 tyres

646 AMG multi-spoke alloy wheels, painted black with high-sheen rim flange, with 225/40 R 18 tyres

## ➤ FURTHER WHEELS

can be found in our accessories range.

Information on the range of Mercedes-Benz Genuine Accessories is available at

**[www.mercedes-benz-accessories.com](http://www.mercedes-benz-accessories.com)** or from your authorised Mercedes-Benz dealer.



Technical data.

Cylinder arrangement/number
Displacement (cc)
Rated output <sup>1</sup> in kW (hp) at rpm
Rated torque <sup>1</sup> (Nm at rpm)
Transmission
Acceleration 0–100 km/h (secs.)
Top speed (km/h)
Front tyres/wheels
Rear tyres/ wheels
Fuel
Fuel consumption <sup>2</sup> (l/100 km)
Urban
Extra-urban
Combined
CO <sub>2</sub> emissions <sup>2</sup> combined (g/km)
Emission class <sup>3</sup> /efficiency class <sup>4</sup>
Tank capacity/incl. reserve (l)
Luggage compartment capacity (l)
Turning circle (m)
Kerb weight <sup>5</sup> /payload (kg)
Permissible gross vehicle weight (kg)

The best for the engine:  
Mercedes-Benz genuine engine oils.

Diesel engines

B 160 d	B 180 d	B 180 d BE Edition	B 200 d	B 200 d 4MATIC	B 220 d	B 220 d 4MATIC
In-line/4	In-line/4	In-line/4	In-line/4	In-line/4	In-line/4	In-line/4
1461	1461	1461	2143	2143	2143	2143
66 (90)/2750–4000	80 (109)/4000	80 (109)/4000	100 (136)/3200–4000	100 (136)/3400–4400	130 (177)/3600–3800	130 (177)/3600–3800
240/1700–2500	260/1750–2500	260/1750–2500	300/1400–3000	300/1400–3000	350/1400–3400	350/1400–3400
6-speed, man. [7G-DCT]	6-speed, man. [7G-DCT]	6-speed, man. [–]	6-speed, man. [7G-DCT]	– [7G-DCT]	– [7G-DCT]	– [7G-DCT]
14.0 [13.8]	11.6 [11.6]	11.6 [–]	9.4 [8.9]	– [8.9]	– [7.6]	– [7.6]
180 [180]	190 [190]	190 [–]	210 [210]	– [207]	– [224]	– [220]
195/65 R 15	195/65 R 15	195/65 R 15	205/55 R 16	225/45 R 17	205/55 R 16	225/45 R 17
195/65 R 15	195/65 R 15	195/65 R 15	205/55 R 16	225/45 R 17	205/55 R 16	225/45 R 17
Diesel	Diesel	Diesel	Diesel	Diesel	Diesel	Diesel
4.9–4.6 [4.7–4.4]	4.9–4.6 [4.7–4.4]	4.1 [–]	5.5–5.3 [4.9–4.7]	– [5.9–5.8]	– [5.0–4.9]	– [5.9–5.8]
4.0–3.6 [4.1–3.7]	4.0–3.6 [4.1–3.7]	3.3 [–]	3.9–3.5 [3.8–3.5]	– [4.5]	– [3.8–3.6]	– [4.5]
4.4–4.0 [4.3–4.0]	4.4–4.0 [4.3–4.0]	3.6 [–]	4.5–4.2 [4.2–4.0]	– [5.0]	– [4.3–4.1]	– [5.0]
113–104 [113–104]	113–104 [113–104]	94 [–]	117–109 [111–104]	– [131–130]	– [111–107]	– [131–130]
Euro 6/A [Euro 6/A]	Euro 6/A [Euro 6/A]	Euro 6/A+ [–]	Euro 6/A [Euro 6/A+]	– [Euro 6/B]	– [Euro 6/A+]	– [Euro 6/B]
50/6	50/6	40/6	50/6	56/6	50/6	56/6
488–1547	488–1547	488–1547	488–1547	488–1547	488–1547	488–1547
11.0	11.0	11.0	11.0	11.0	11.0	11.0
1420/565 [1450/535]	1420/565 [1450/535]	1410/490 [–]	1485/540 [1505/520]	– [1575/520]	– [1505/520]	– [1575/520]
1985 [1985]	1985 [1985]	1900 [–]	2025 [2025]	– [2095]	– [2025]	– [2095]

<sup>1</sup> Figures for rated output and rated torque in accordance with Regulation (EC) no. 595/2009 as amended. <sup>2</sup> The figures stated for fuel consumption and CO<sub>2</sub> emissions were determined in accordance with the specified measuring process (§ 2 nos. 5, 6, 6a of German energy labelling ordinance for cars (Pkw-EnVKV) as amended). The figures are not based on an individual vehicle and do not constitute part of the product offer; they are provided solely for purposes of comparison between different vehicle models. Figures vary depending on wheels/tyres. <sup>3</sup> Figure only valid within the European Union. May vary from country to country. <sup>4</sup> Determined on the basis of the measured CO<sub>2</sub> emissions, taking into account

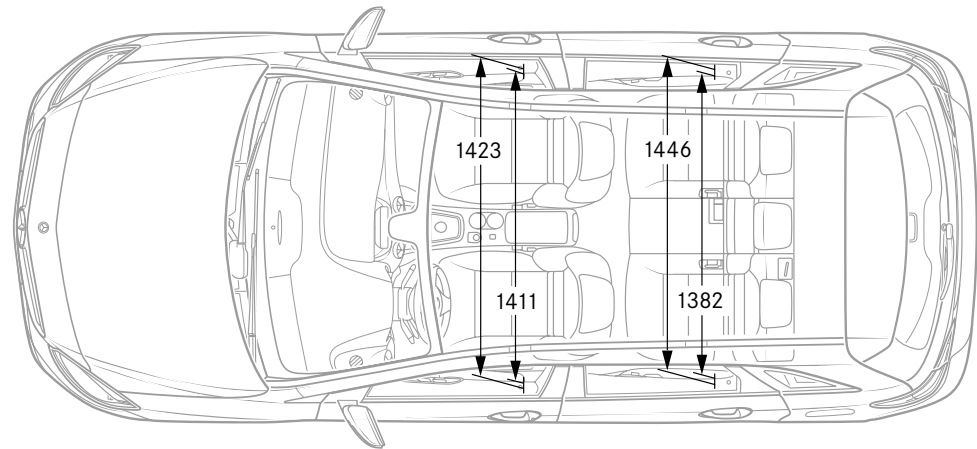
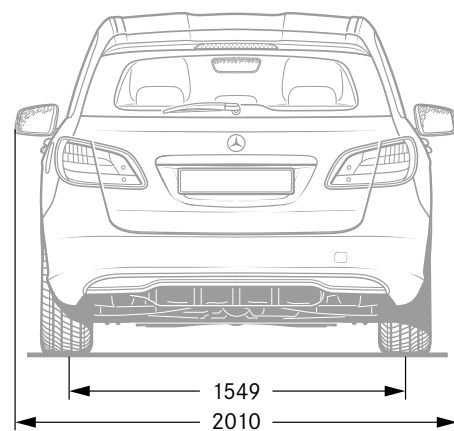
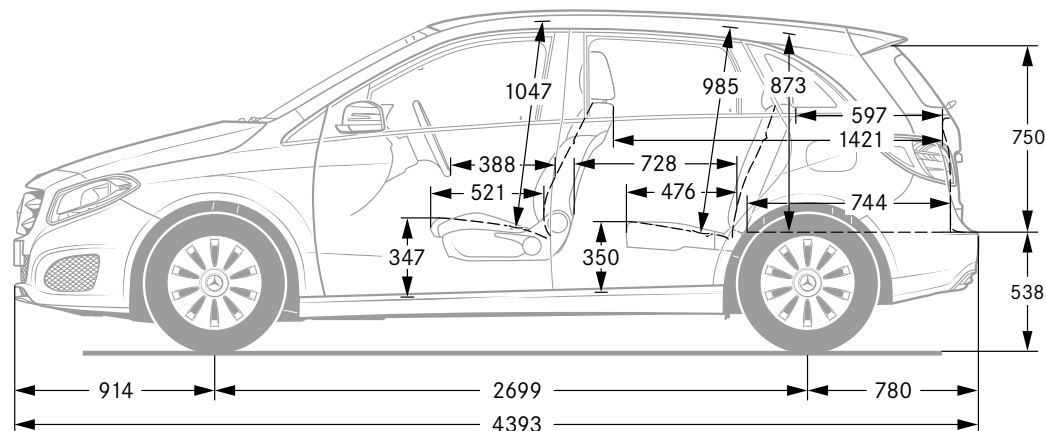
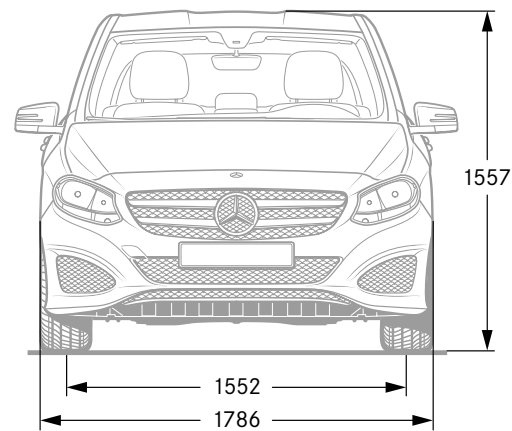
### Petrol engines

	<b>B 160</b>	<b>B 180</b>	<b>B 180 BE Edition</b>	<b>B 200</b>	<b>B 220 4MATIC</b>	<b>B 250</b>	<b>B 250 4MATIC</b>
Cylinder arrangement/number	In-line/4	In-line/4	In-line/4	In-line/4	In-line/4	In-line/4	In-line/4
Displacement (cc)	1595	1595	1595	1595	1991	1991	1991
Rated output <sup>1</sup> in kW (hp) at rpm	75 (102)/4500–6000	90 (122)/5000	90 (122)/5000	115 (156)/5300	135 (184)/5500	155 (211)/5500	155 (211)/5500
Rated torque <sup>1</sup> (Nm at rpm)	180/1200–3500	200/1250–4000	200/1250–4000	250/1250–4000	300/1200–4000	350/1200–4000	350/1200–4000
Transmission	6-speed, man. [7G-DCT]	6-speed, man. [7G-DCT]	6-speed, man. [-]	6-speed, man. [7G-DCT]	- [7G-DCT]	6-speed, man. [7G-DCT]	- [7G-DCT]
Acceleration 0–100 km/h (secs.)	10.7 [10.6]	9.0 [8.7]	9.0 [-]	8.2 [7.9]	- [7.0]	6.6 [6.5]	- [6.5]
Top speed (km/h)	190 [190]	200 [200]	190 [-]	220 [220]	- [225]	240 [240]	- [235]
Front tyres/wheels	195/65 R 15	195/65 R 15	195/65 R 15	205/55 R 16	205/55 R 16	225/45 R 17	225/45 R 17
Rear tyres/wheels	195/65 R 15	195/65 R 15	195/65 R 15	205/55 R 16	205/55 R 16	225/45 R 17	225/45 R 17
Fuel	Premium petrol	Premium petrol	Premium petrol	Premium petrol	Premium petrol	Premium petrol	Premium petrol
Fuel consumption <sup>2</sup> (l/100 km)							
Urban	7.2 [7.1–7.0]	7.6–7.4 [7.1–7.0]	7.0 [-]	7.6–7.4 [7.1–7.0]	- [8.5]	8.8–8.6 [8.7–8.6]	- [8.5]
Extra-urban	4.6–4.4 [4.9–4.6]	4.8–4.5 [4.9–4.6]	4.2 [-]	4.8–4.6 [4.9–4.6]	- [5.8–5.6]	5.5–5.3 [4.8–4.7]	- [5.8–5.6]
Combined	5.6–5.5 [5.7–5.5]	5.8–5.6 [5.7–5.5]	5.2 [-]	5.8–5.7 [5.7–5.5]	- [6.8–6.7]	6.8–6.6 [6.2]	- [6.8–6.7]
CO <sub>2</sub> emissions <sup>2</sup> combined (g/km)	130–126 [132–127]	135–129 [132–127]	122 [-]	135–130 [132–127]	- [158–156]	157–152 [145–143]	- [158–156]
Emission class <sup>3</sup> /efficiency class <sup>4</sup>	Euro 6/B [Euro 6/B]	Euro 6/C [Euro 6/B]	Euro 6/B [-]	Euro 6/B [Euro 6/B]	- [Euro 6/D]	Euro 6/D [Euro 6/C]	- [Euro 6/D]
Tank capacity/incl. reserve (l)	50/6	50/6	50/6	50/6	56/6	50/6	56/6
Luggage compartment capacity (l)	488–1547	488–1547	488–1547	488–1547	488–1547	488–1547	488–1547
Turning circle (m)	11.0	11.0	11.0	11.0	11.0	11.0	11.0
Kerb weight <sup>5</sup> /payload (kg)	1395/565 [1425/535]	1395/565 [1425/535]	1395/565 [-]	1395/565 [1425/535]	- [1505/525]	1440/550 [1465/525]	- [1505/525]
Permissible gross vehicle weight (kg)	1960 [1960]	1960 [1960]	1960 [-]	1960 [1960]	- [2030]	1990 [1990]	- [2030]

the mass of the vehicle. <sup>5</sup> Figures for kerb weight in accordance with Directive 92/21/EC as amended (mass in ready-to-drive condition, fuel tank 90 percent full, with driver, 68 kilograms, and luggage, 7 kilograms) for standard-specification vehicles. Optional extras and accessories will generally increase this figure and reduce the payload capacity accordingly. Figures in square brackets refer to engines in conjunction with automatic transmission. You can find further technical data at [www.mercedes-benz.com](http://www.mercedes-benz.com)



Dimensions.



All dimensions in millimetres. The dimensions shown are mean values and apply to standard-specification, unladen vehicles.

# Upholstery and trim.

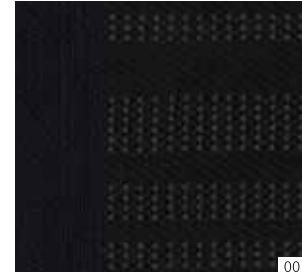
## Upholstery

- 001 Venlo fabric in black
- 031 Vianen fabric in black
- 038 Vianen fabric in crystal grey
- 105 ARTICO man-made leather in sahara beige<sup>1</sup>
- 111 ARTICO man-made leather in black<sup>1</sup>
- 118 ARTICO man-made leather in crystal grey<sup>1</sup>
- 201 Leather in black
- 204 Leather in hazelnut brown
- 207 Leather in cranberry red
- 611 ARTICO man-made leather/Montfoort fabric in black
- 618 ARTICO man-made leather/Montfoort fabric in crystal grey
- 661 ARTICO man-made leather/DINAMICA microfibre in black
- 821 RED CUT leather in black

## Trim

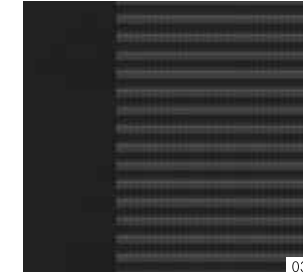
- H88 Matrix look
- H53 Line pattern
- H81 Sail pattern
- H74 Carbon-fibre look
- 734 Brown open-pore eucalyptus wood<sup>1, 2</sup>
- 736 High-gloss black ash wood<sup>1, 3</sup>

Standard equipment



001

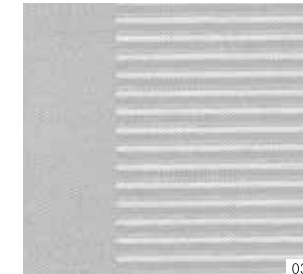
Style<sup>1</sup>



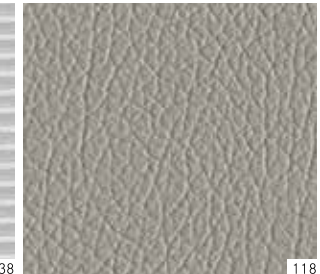
031



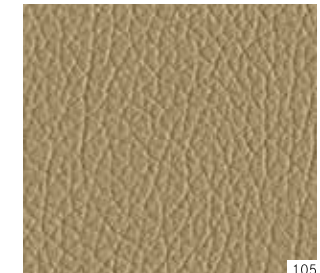
111



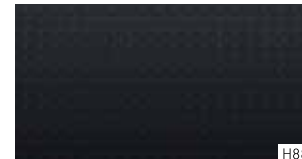
038



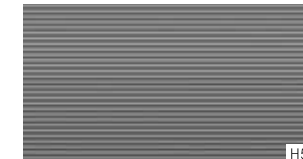
118



105



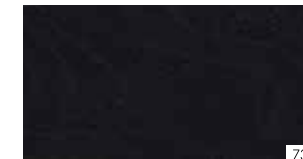
H88



H53



734



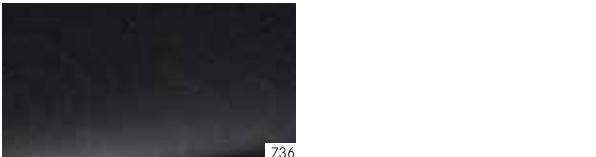
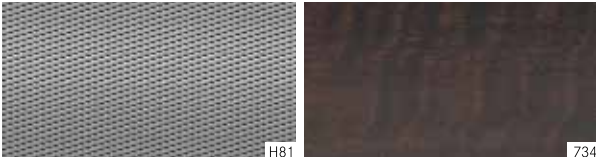
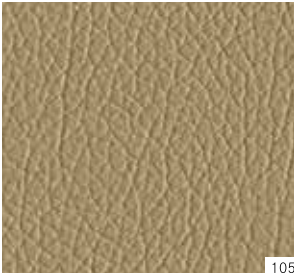
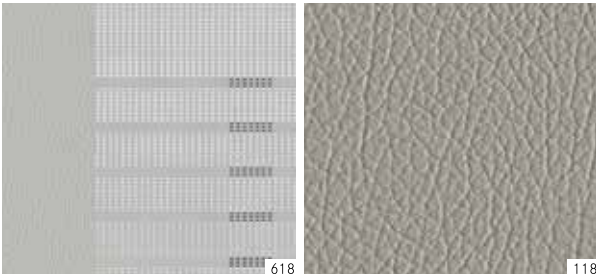
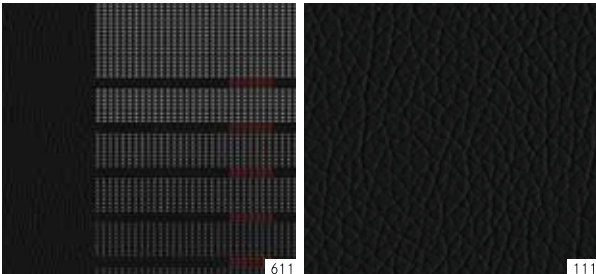
736

<sup>1</sup> Option. <sup>2</sup> Part of the Exclusive package.

<sup>3</sup> No-cost option in conjunction with Exclusive package.



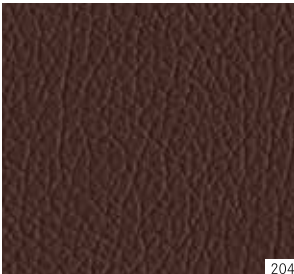
Urban¹



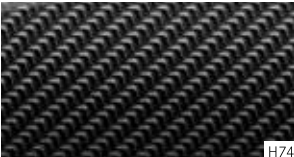
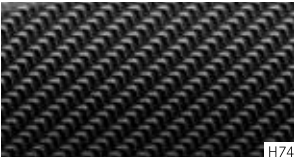
AMG Line¹



Exclusive package¹



AMG Exclusive package¹

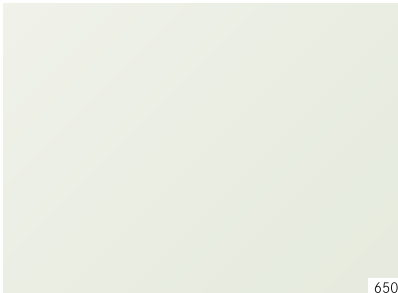


# Paint finishes.

Non-metallic paints	
589	jupiter red
650	cirrus white
696	night black
Metallic paints¹	
175	elbaite green
191	cosmos black
761	polar silver
787	mountain grey
890	cavansite blue
895	canyon beige
990	orient brown

¹ Optional extras.

Non-metallic paints



Metallic paints¹







**Mercedes-Benz is one of the founding partners of the “Laureus Sport for Good Foundation”.**

Since the foundation was established in 2000, Mercedes-Benz has been supporting and promoting the aims and values of this worldwide non-profit-making programme: to use social sports projects to improve the lives of children and young people who are disadvantaged or suffering from illness. Laureus has become a fundamental element of Mercedes-Benz’s social responsibility. Every new Mercedes is an ambassador embodying these values. In buying a Mercedes you are supporting the “Laureus Sport for Good Foundation”.

**Please note:** changes may have been made to the product since this brochure went to press (04.07.2017). The manufacturer reserves the right to make changes to the design, form, colour and specification during the delivery period, provided these changes, while taking into account the interests of the vendor, can be deemed reasonable with respect to the purchaser. Where the vendor or the manufacturer uses symbols or numbers to describe an order or the subject of an order, no rights may be derived solely from these. The illustrations may show accessories and items of optional equipment which are not part of standard specification. Colours may differ slightly from those shown in the brochure, owing to the limitations of the printing process. This brochure is distributed internationally. It provides a general indication of the range of models, features, optional extras and/or colours available in various countries. Some of the models, features, optional extras and/or colours shown may not be available in your country or may only be available in a different specification. Additionally some models, features, optional extras and/or colours may only be available in combination with others. For current and more specific information in relation to the range of models, features, optional extras and/or colours available in your country, and their pricing, you should contact your nearest authorised Mercedes-Benz Passenger Car Dealer.

**[www.mercedes-benz.com](http://www.mercedes-benz.com)**

**Take-back of end-of-life vehicles.** At the end of its long life, you can return your B-Class to us for environment-friendly disposal in accordance with the European Union (EU) End-Of-Life Vehicle Directive. But that day lies a long way off.

A network of vehicle take-back depots and dismantling facilities has been established to make it as easy as possible for you to return your vehicle. You can leave it at any of these points free of charge. In so doing, you will be making a valuable contribution towards completing the recycling loop and preserving resources.

For more information about the recycling and disposal of end-of-life vehicles and take-back conditions, please visit your national Mercedes-Benz website.